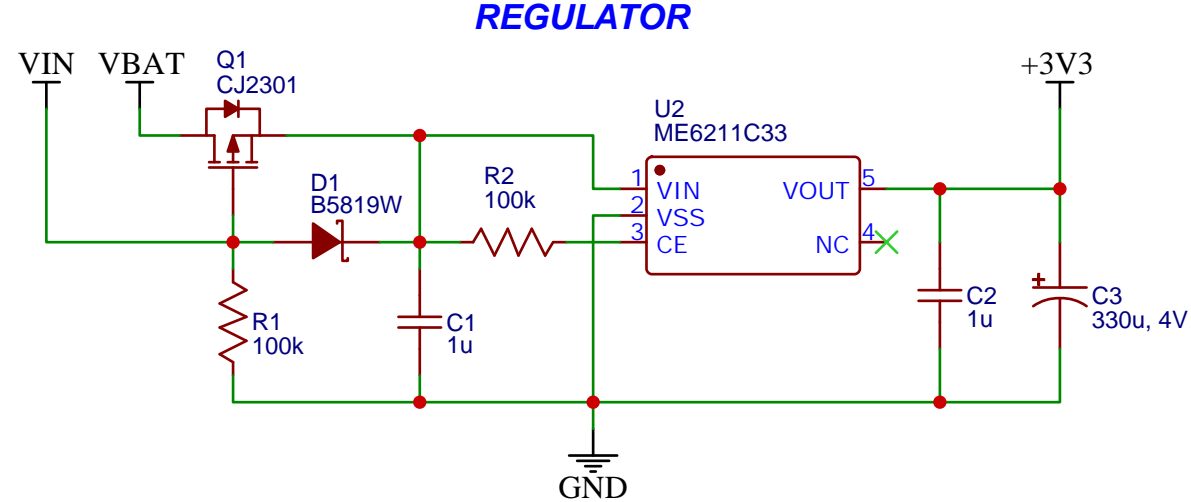
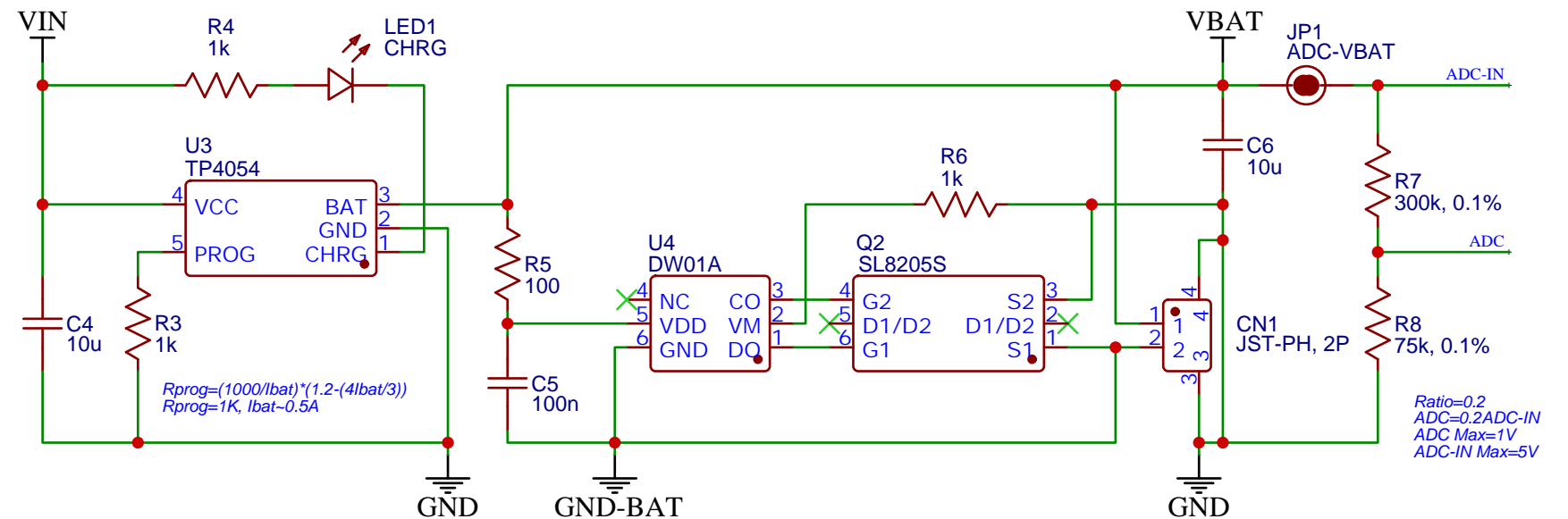


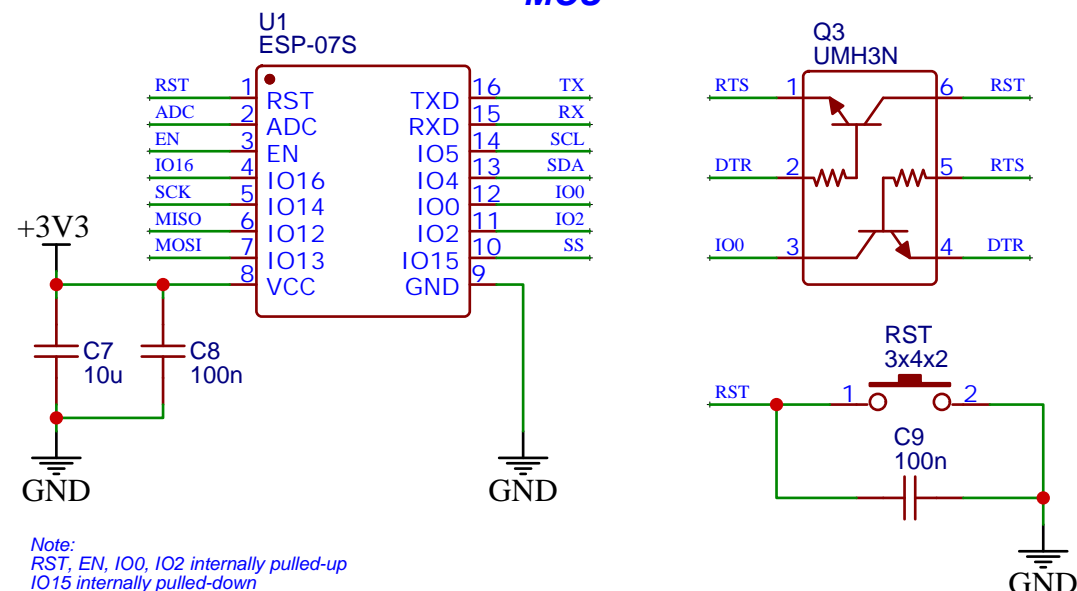
REGULATOR



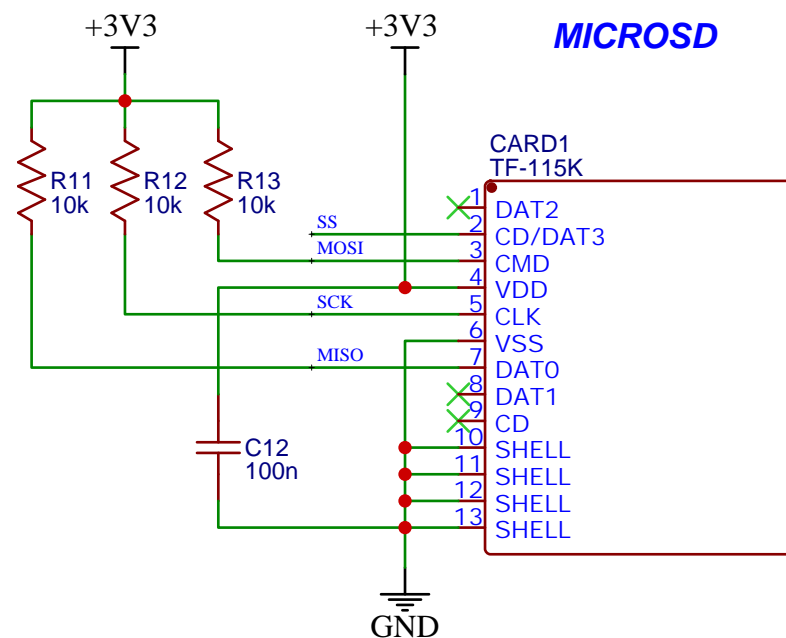
CHARGER & PROTECTION



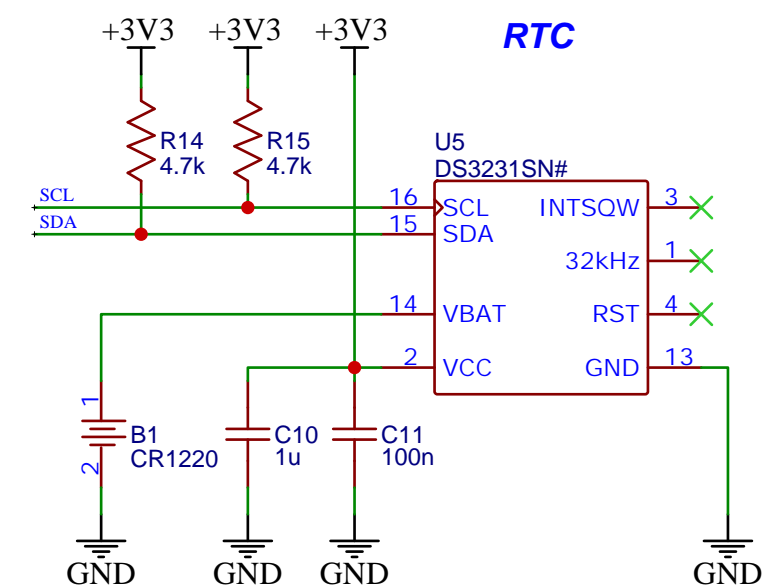
MCU



MICROSD



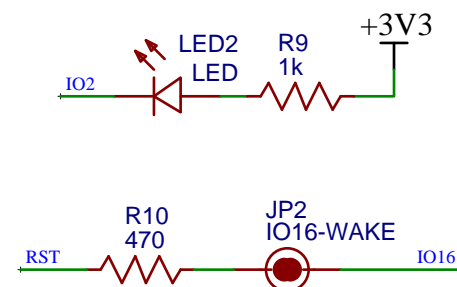
RTC




I/O

P1 I/O Port			
1	VIN	1VIN	
2	VBAT	2VBAT	
3	ADC-IN	3ADC	
4	+3V3	43V3	
5	+3V3	53V3	
6	GND	6GND	
7	GND	7GND	
8	DTR	8DTR	
9	RTS	9RTS	
10	RST	10RST	
11	RX	11IO3/RX	
12	TX	12IO1/TX	
13	SCK	13IO14/SCK	
14	MISO	14IO12/MISO	
15	MOSI	15IO13/MOSI	
16	SS	16IO15/SS	
17	SCL	17IO5/SCL	
18	SDA	18IO4/SDA	

P2 I/O Port			
1	GND	19	GND
2	+3V3	20	3V3
3	IO0	21	IO0
4	TX	22	IO1
5	IO2	23	IO2
6	RX	24	IO3
7	SDA	25	IO4
8	SCL	26	IO5
9	GND	27	GND
10	MISO	28	IO12
11	MOSI	29	IO13
12	SCK	30	IO14
13	SS	31	IO15
14	IO16	32	IO16
15	ADC	33	ADC
16	EN	34	EN
17	GND	35	GND
18	+3V3	36	3V3



TITLE: CORE BOARD ESP-07S		REV: 1.0
	Company: SENTSOR	Sheet: 1/1
	Date: 2020-01-15 Drawn By: adamalfath	