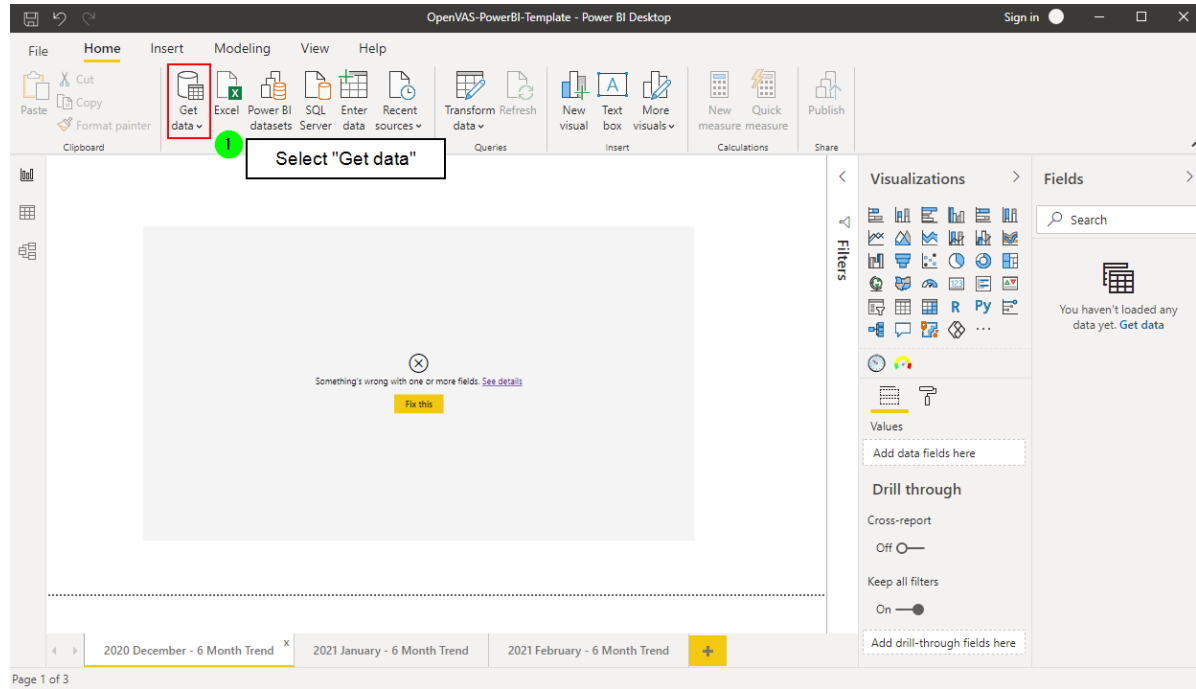
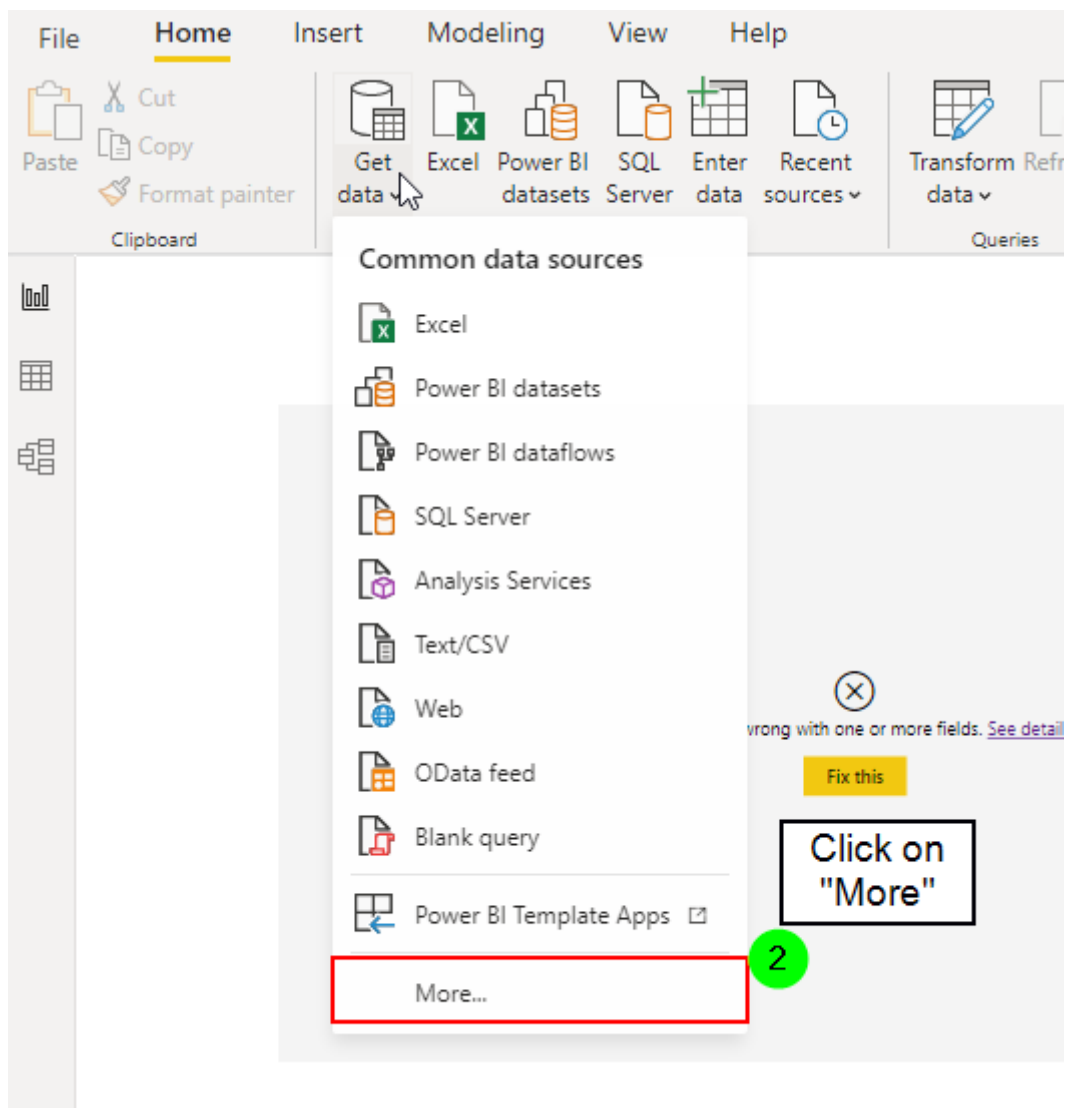
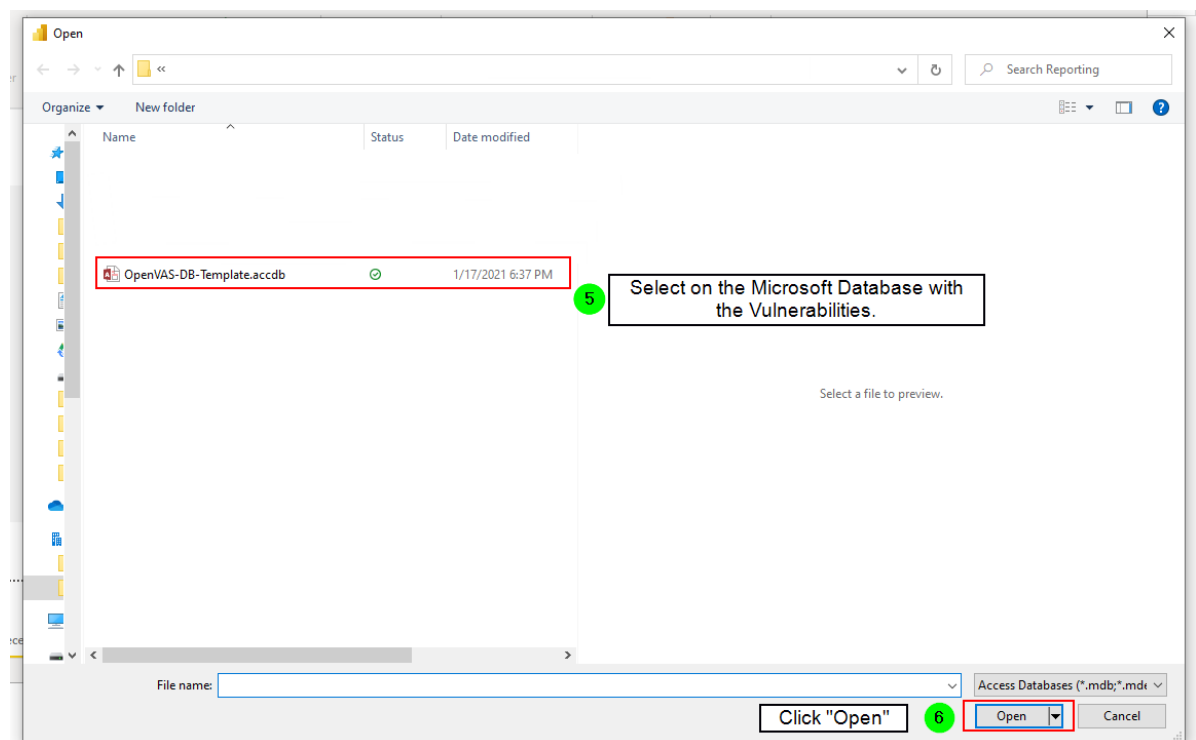
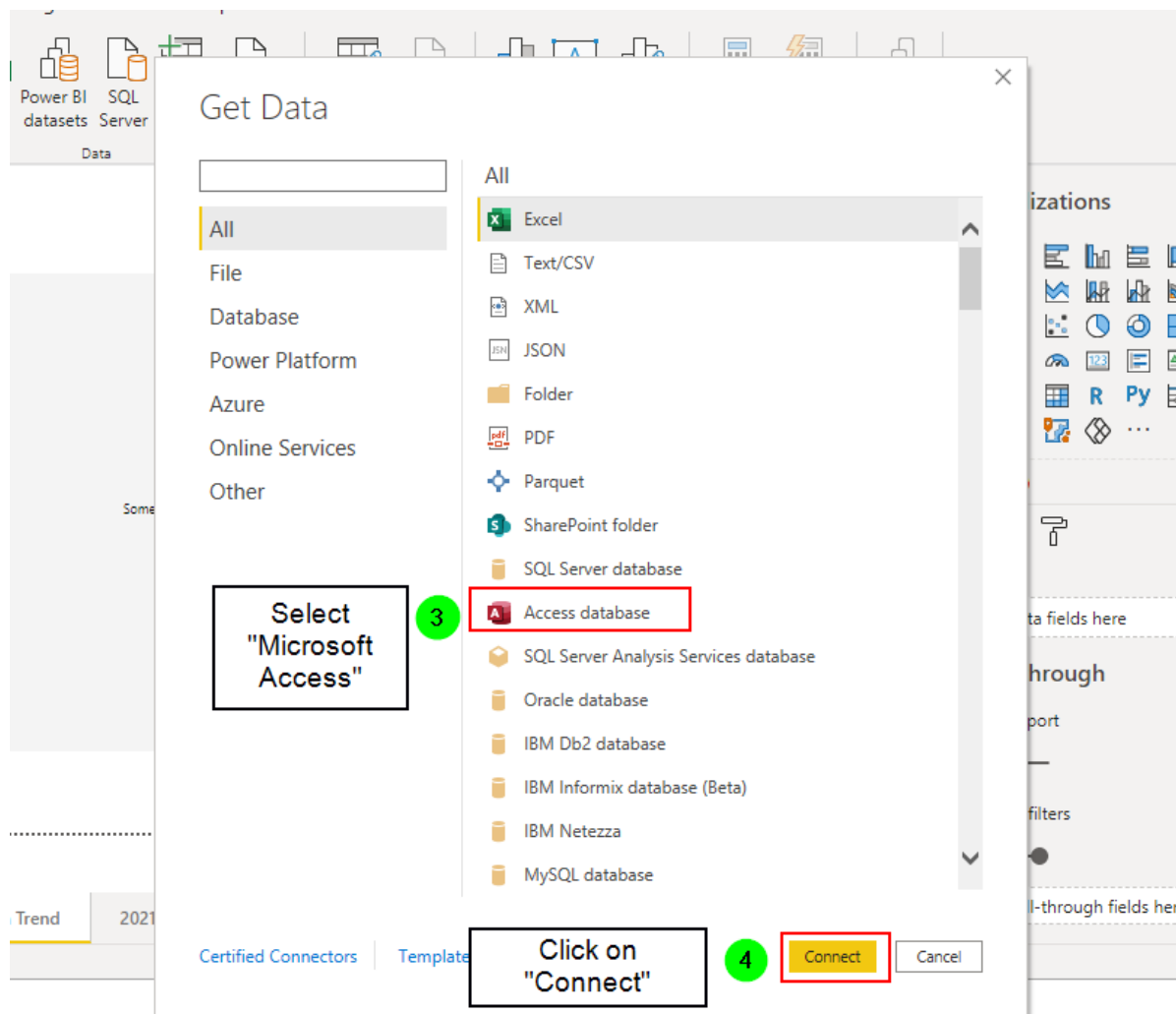
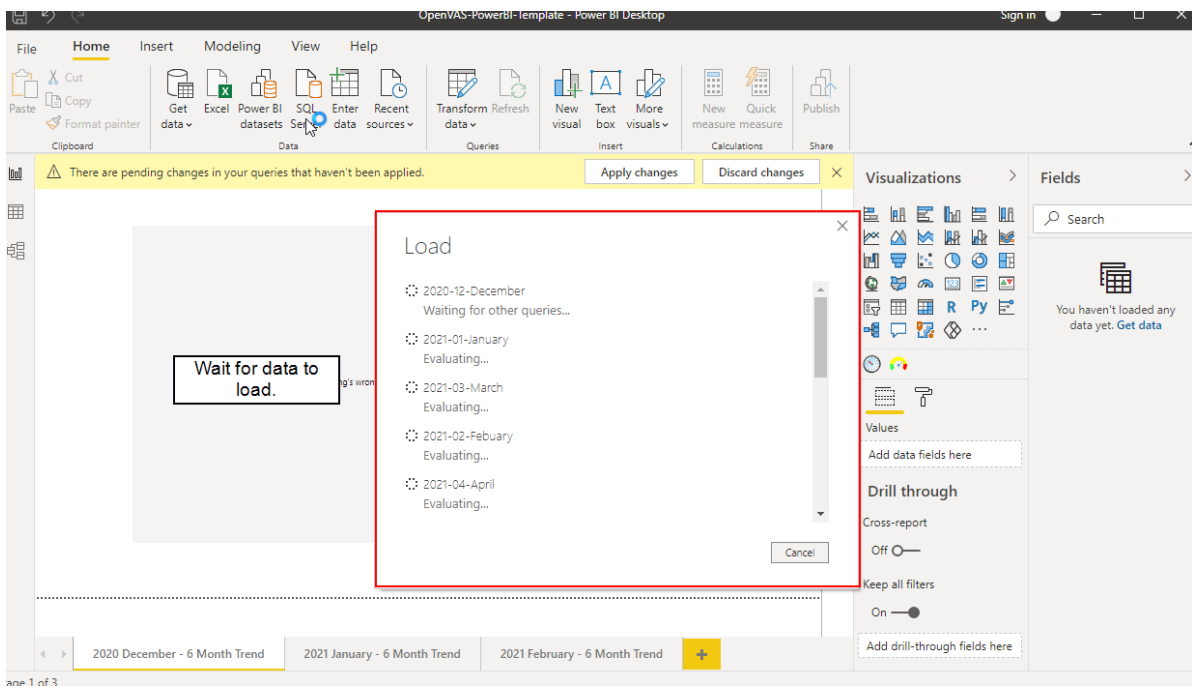
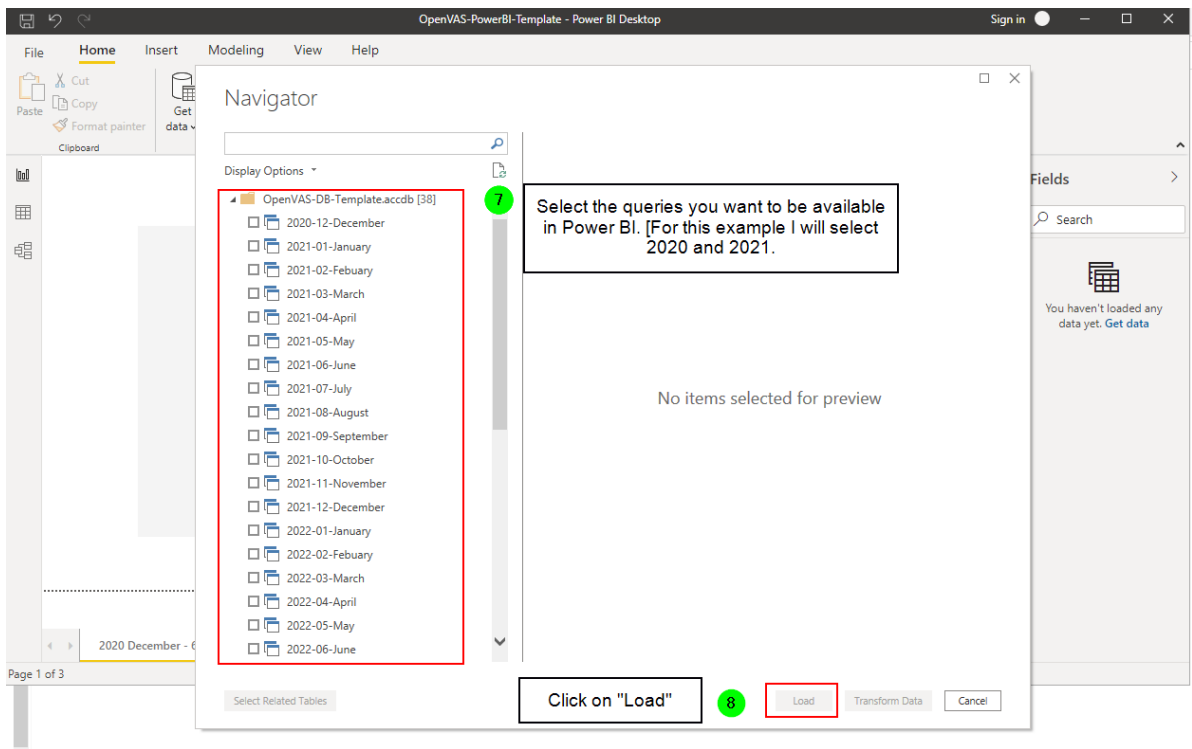


Connecting OpenVAS Vulnerabilities Microsoft Access Database to Power BI









File Home Insert Modeling View Help **Format** Data / Drill Table tools

Name 2020-12-December

Structure

Mark as date table
Calendars

Manage relationships
Relationships

New measure
Measure

Quick measure column
Calculations

New table

Left click on the graph

Select (expand) the month that correspond with the page.

Visualizations

Filters

2020-12-December

CVSS

IP

NVT Name

Scan Date

Severity

2021-01-January

2021-02-February

2021-03-March

2021-04-April

2021-05-May

2021-06-June

2021-07-July

2021-08-August

2021-09-September

2021-10-October

2021-11-November

2021-12-December

Add data fields here

Legend

Add data fields here

Values

Add data fields here

Tooltips

Add data fields here

Drill through

Cross-report

Off

Keep all filters

2020 December - 6 Month Trend

2021 January - 6 Month Trend

2021 February - 6 Month Trend

You can duplicate by right clicking on the page you want to duplicate.

Cut Copy Format painter Clipboard

Get data

Excel

Power BI datasets

SQL Server

Enter data

Recent sources

Transform data

Refresh data

Queries

New visual

Text box

More visuals

Insert

New measure

Quick measure

Calculations

Publish

Share

Vulnerability Trend

December

200

150

100

50

0

High

Medium

Severity

Check boxes so they match the following

Visualizations

Filters

2020-12-Decemb...

CVSS

IP

NVT Name

Scan Date

Date Hier...

Year

Quarter

Month

Day

Severity

2021-01-January

2021-02-February

2021-03-March

2021-04-April

2021-05-May

2021-06-June

2021-07-July

2021-08-August

2021-09-Septem...

2021-10-October

Axis

Severity

Legend

Scan Date

Month

Values

Count of NVT Name

Tooltips

Add data fields here

Drill through

Cross-report

Off

2020 December - 6 Month Trend

2021 January - 6 Month Trend

2021 February - 6 Month Trend

Ensure that the visualization are match the following.

