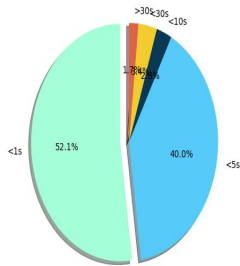
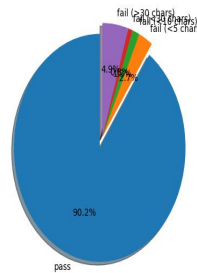


Date	04/06/2022, 13:01:04
Test	test_extract_text_expect_ground_truth
Description	This test attempts to read a corpus of roughly 1000 PDF documents, comparing the extracted text against the ground truth.

Timing Information



Failure Information



- processed 597 documents
- 62 fail(s), 535 pass(es)
- avg. processing time: 2.765336 seconds
- max. processing time: 157.076492 seconds
- min. processing time: 0.008758 seconds

Most Error-prone Documents

Document	Number of errors
0445_page_0	3540
0552_page_0	725
0354_page_0	713
0009_page_0	571
0236_page_0	394

Slowest Documents

Document	Time (seconds)
0166_page_0	157.0764923095703
0134_page_0	81.80152869224548
0139_page_0	47.601104736328125
0389_page_0	46.92981290817261
0372_page_0	41.88714790344238

Fastest Documents

Document	Time (seconds)
0027_page_0	0.008758306503295898
0398_page_0	0.01686382293701172
0046_page_0	0.019504070281982422
0233_page_0	0.02686786651611328
0457_page_0	0.03748893737792969